

Project Name:	
Type:	

QM20 Series

20 Watts Max | Multi-Dimm

PRODUCT FEATURE:

- Compact size maximizes design flexibility.
- Low flickering – Less than 10% up to 120Hz
- No-load power consumption less than 0.5W
- Turn on time – Less than 500mS
- 4 in 1 dimming – TRIAC / ELV / 0-10V / PWM
- Dimming percentage less than 1% - All dimming methods
- Both CC and CV output are compatible to 4 in 1 dimming
- Output programming tool with full range adjustable; 50mA increments
- Wireless using ZigBee or Bluetooth SIG Protocol – Optional
- Transient Protection
- UL8750 Class 2 Class P and CE compliant
- External thermal protection available. (Optional feature)



SPECIFICATIONS:

Input Range	: 110 - 277VAC / 0.25 - 0.10A / 47 - 63Hz
DC output Rang	: Easy Tool Programmable
Efficiency	: 85% typical
Power Factor	: > 0.98 at full load, 115VAC or 230VAC
Output Current Regulation	: ±5%
Protection	: OCP, SCP, OVP, OTP - Auto recovery
Surge Rating	: 2.0 KVA
Dimming	: Compatible with TRIAC / ELV / 0-10V / PWM
PWM dimming Signal	: 500Hz - 10Khz; Min. 10V amplitude
Operation Temp.	: -30°C - +50°C, Tc : 90°C
Storage Temp.	: -40°C - +85°C
Humidity (Non-Condensing)	: 5% to 95%
Vibration Frequency	: 5 to 50Hz
MTBF	: >100,000 hours, full load, 25°C Amb., MIL-217F
Regulation Compliance	: UL8750 Supplement SF, Class P EN61347, EN55015, EN61547
Cooling	: Convection
Dimension	: 3.36" x 1.49" x 1.09" (L x W x H)

WARRANTY

- See [Limited Warranty Policy](#) for more additional information

MODEL SELECTION:

MODEL NUMBER	DC OUTPUT RANGE (VF)	MAX. OUTPUT CURRENT (MA)	MAX. OUTPUT POWER (W)
QM20-U48-yyyy-XP	20 ~ 48 VDC; CC	150 - 1050	20
QM20-U24-XP	24 VDC; CV	830	20
QM20-U12-XP	12 VDC; CV	1660	20

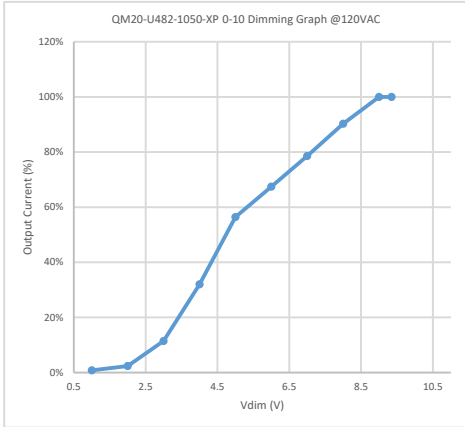
Note: "yyyy" = Output current

Project Name:	
Type:	

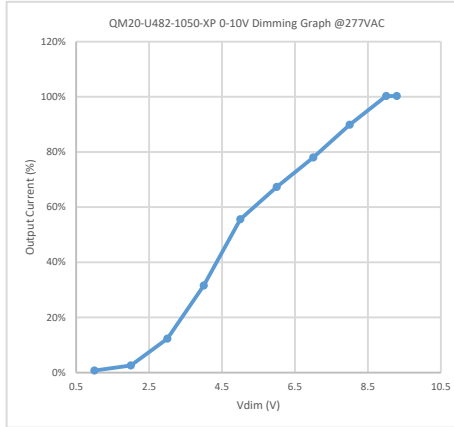
QM20 Series

20 Watts Max | Multi-Dimm

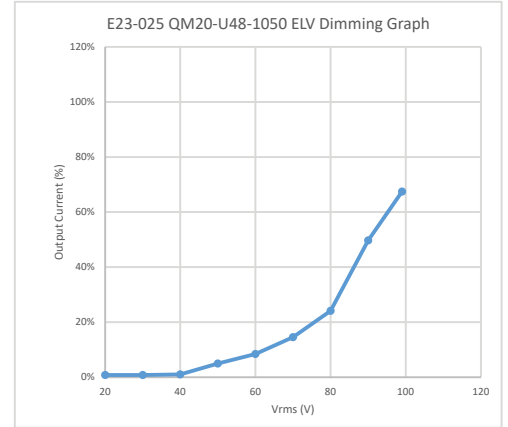
0-010 DIMMING GRAPH @120VAC



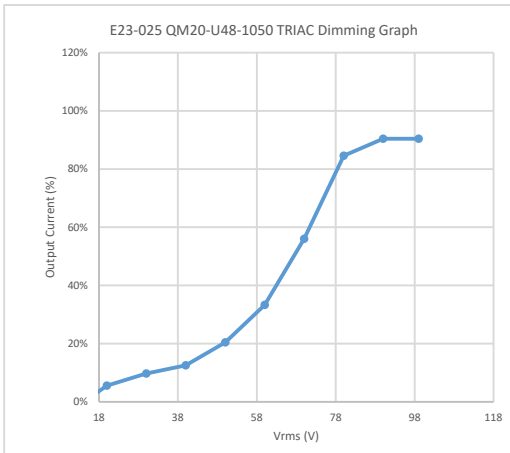
0-010 DIMMING GRAPH @277VAC



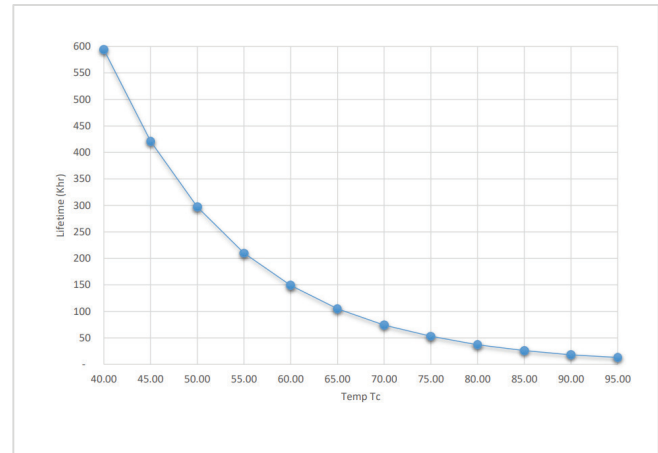
ELV DIMMING GRAPH



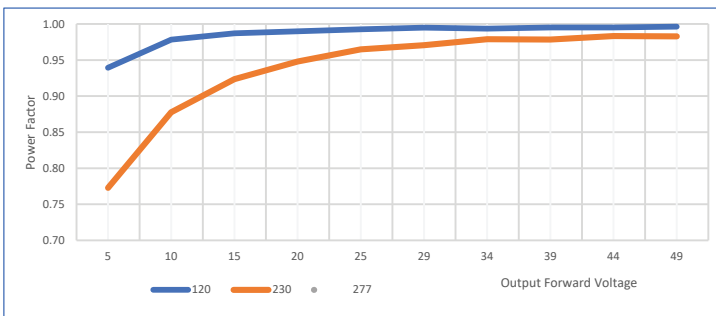
TRIAC DIMMING GRAPH



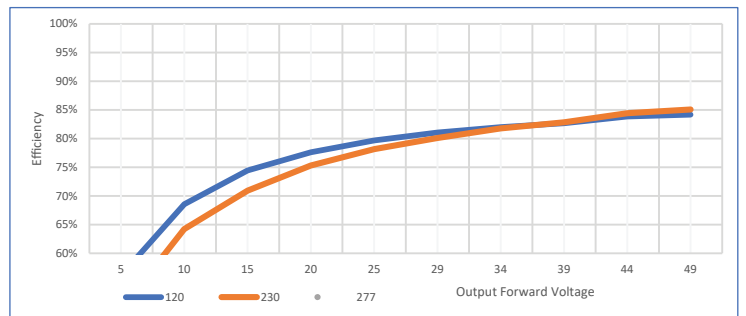
LIFE TIME VS TC GRAPH



POWER FACTOR VS LOAD



EFFICIENCY VS LOAD

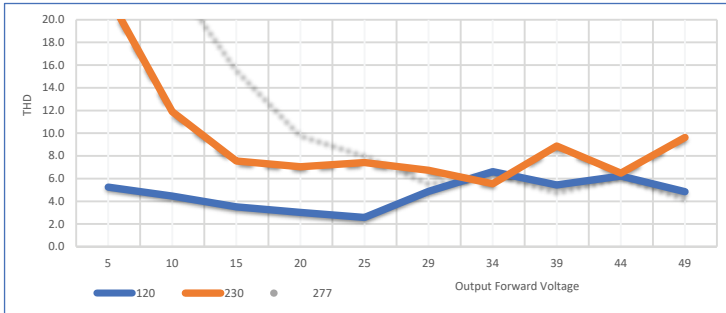


Project Name:	
Type:	

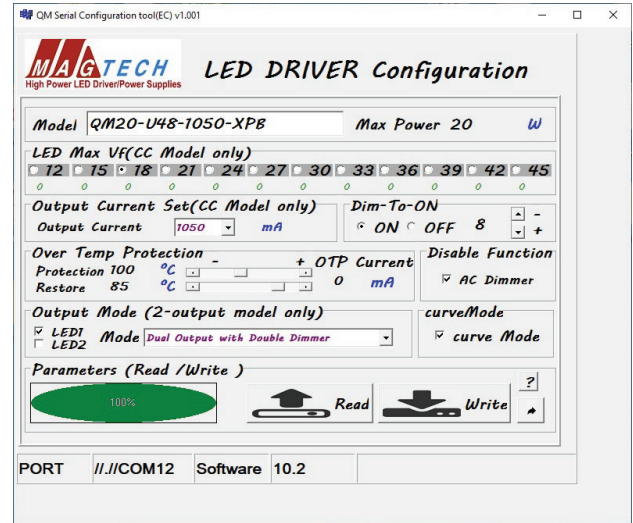
QM20 Series

20 Watts Max | Multi-Dimm

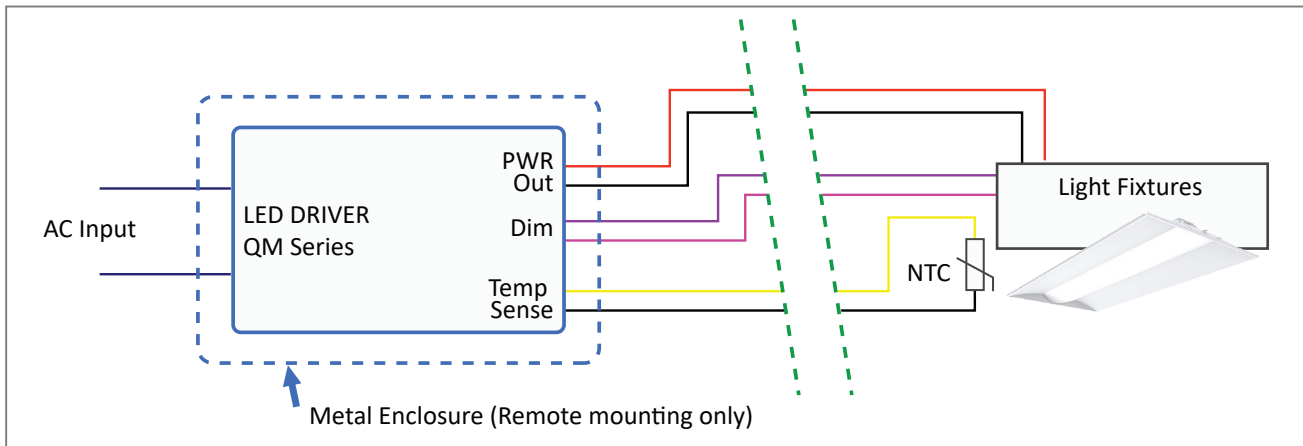
THD VS LOAD



SERIAL CONFIGURATION:



WIRING DIAGRAM:



Note:

- External thermal protection is an optional feature.
- Recommended for NTC;
 Leaded: Vishay, PN: NTCLE100E3104*B0
 Screw: Vishay, PN: NTCASCWE3104J
 Lug: Vishay, PN: NTCALUG02A104H

MECHANICAL DRAWING:

